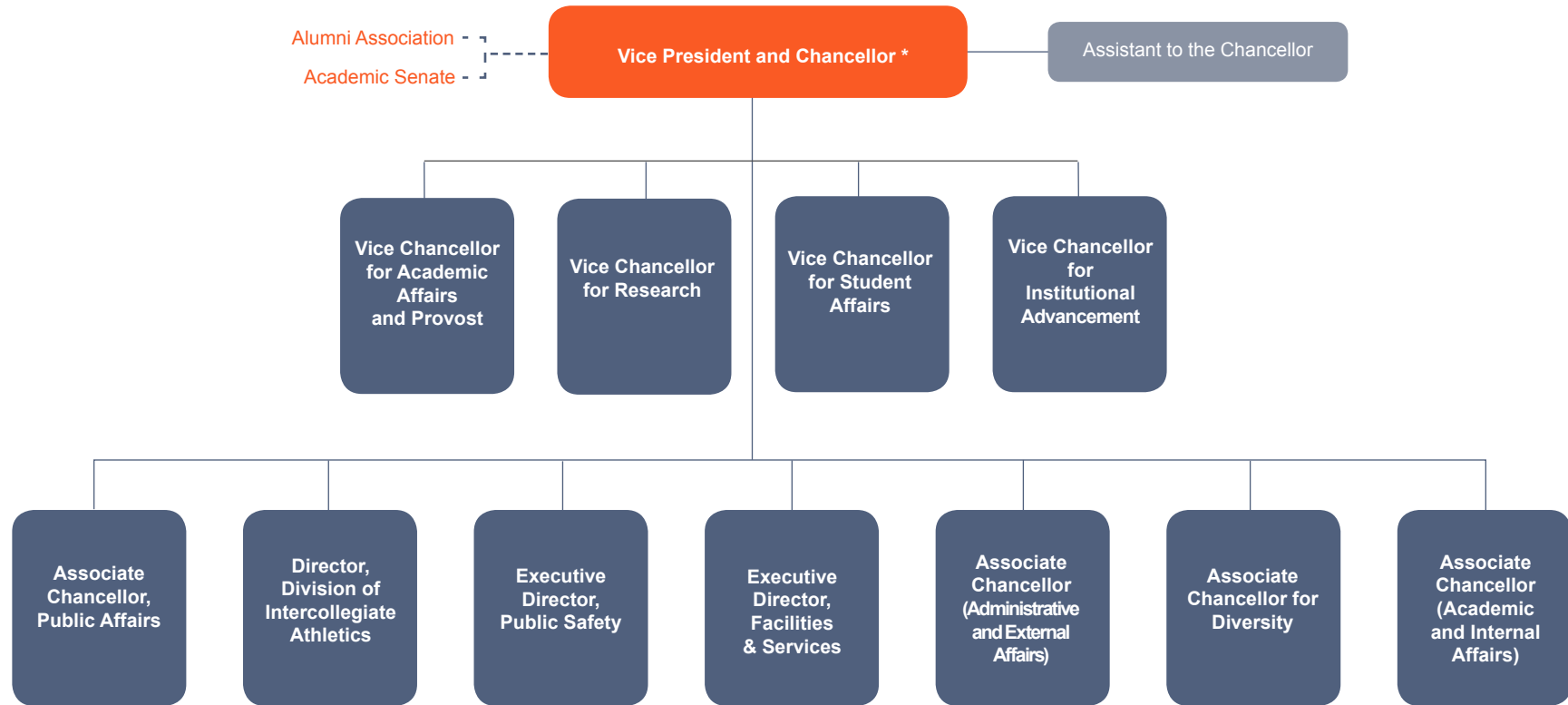
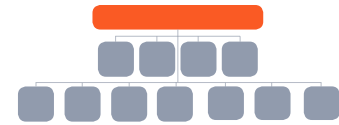


University of Illinois at Urbana-Champaign Administrative Organizational Chart

The University of Illinois at Urbana-Champaign is a large, complex institution. While our missions of learning, discovery and engagement are straightforward, how we organize ourselves to deliver them can sometimes be a little confusing. We hope this interactive organizational chart helps to illustrate how we operate and where all of the parts of a very diverse university fit together.

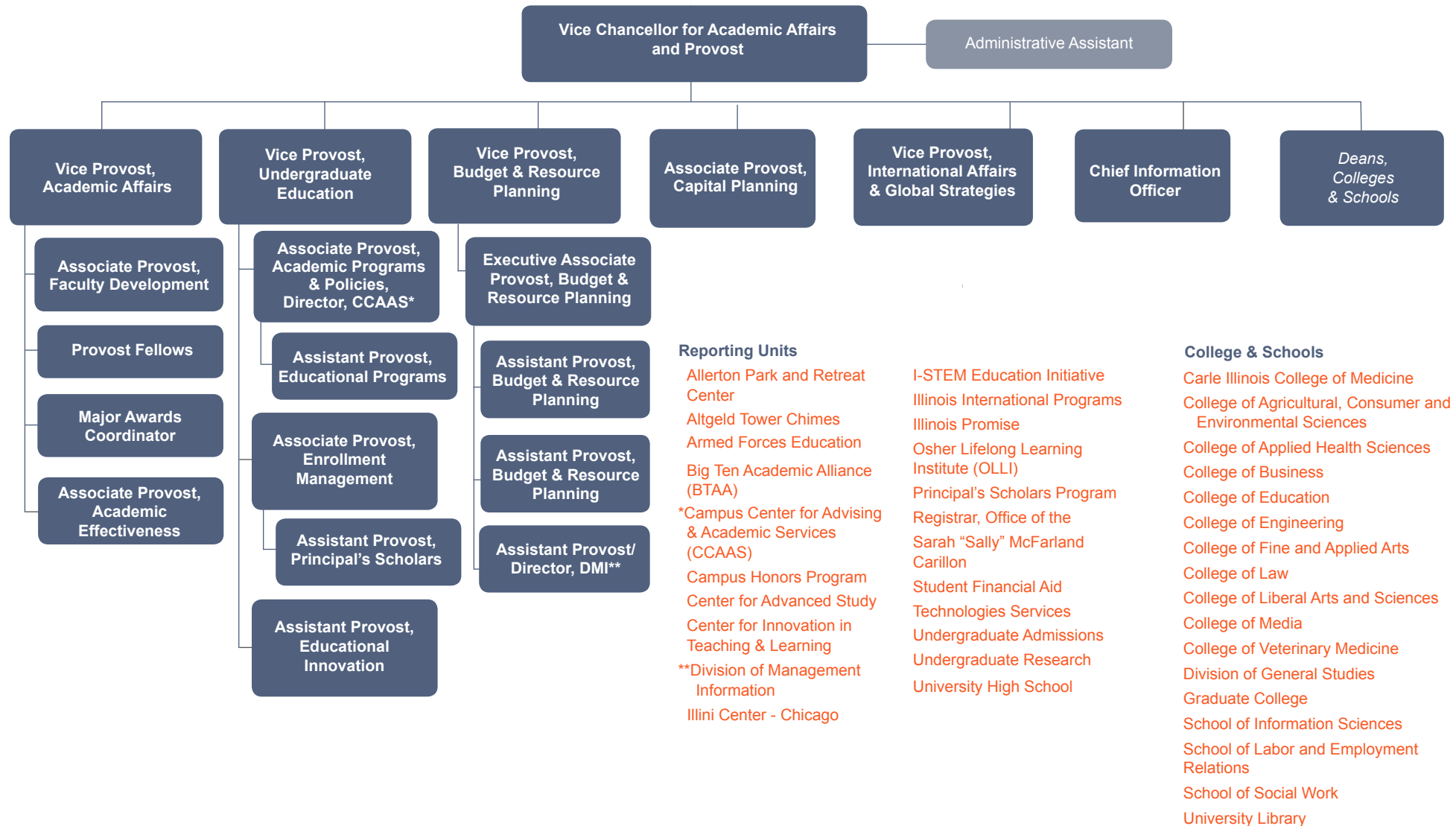
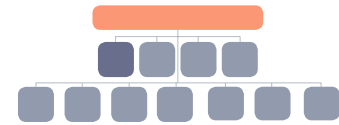


** Also serves as vice president of the University of Illinois system*

NOTE: Click the top level position to visit the unit's homepage.

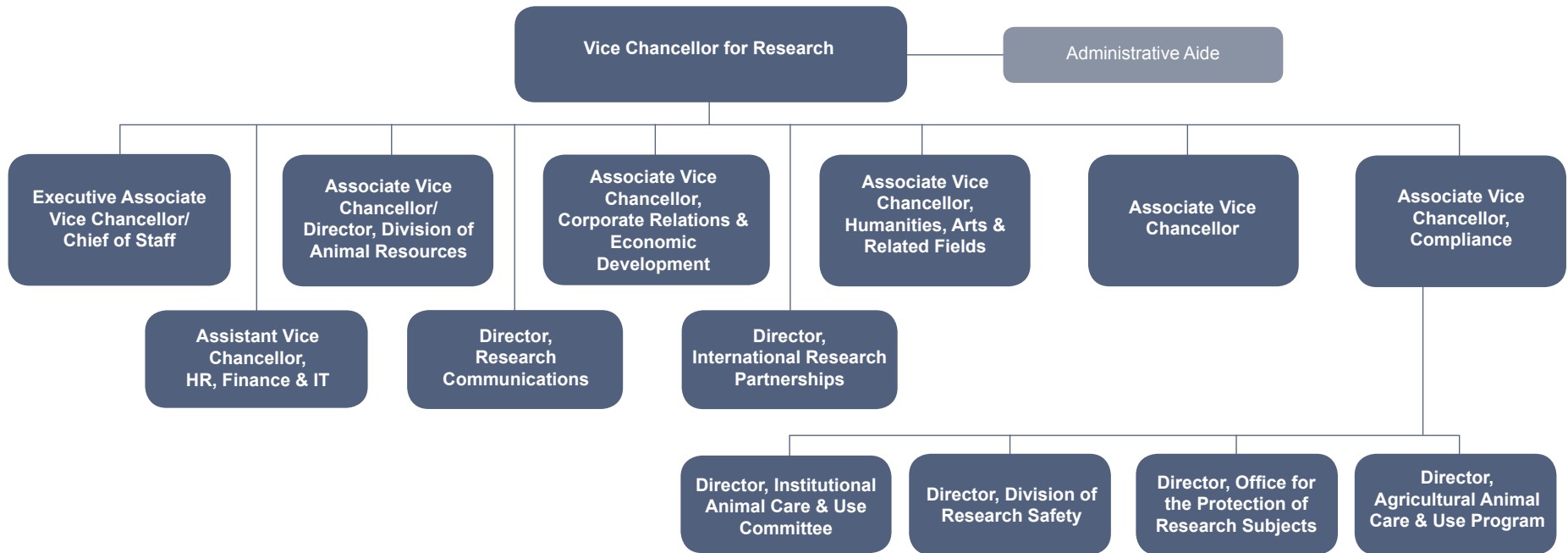
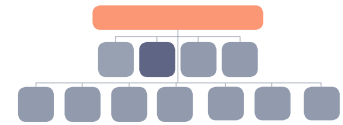


Key **Reporting Positions** Reporting Units
 Reporting Office Website links



NOTE: Click the top level position to visit the unit's homepage. Click here for the complete list of responsibilities and reporting units by position.





Reporting Units

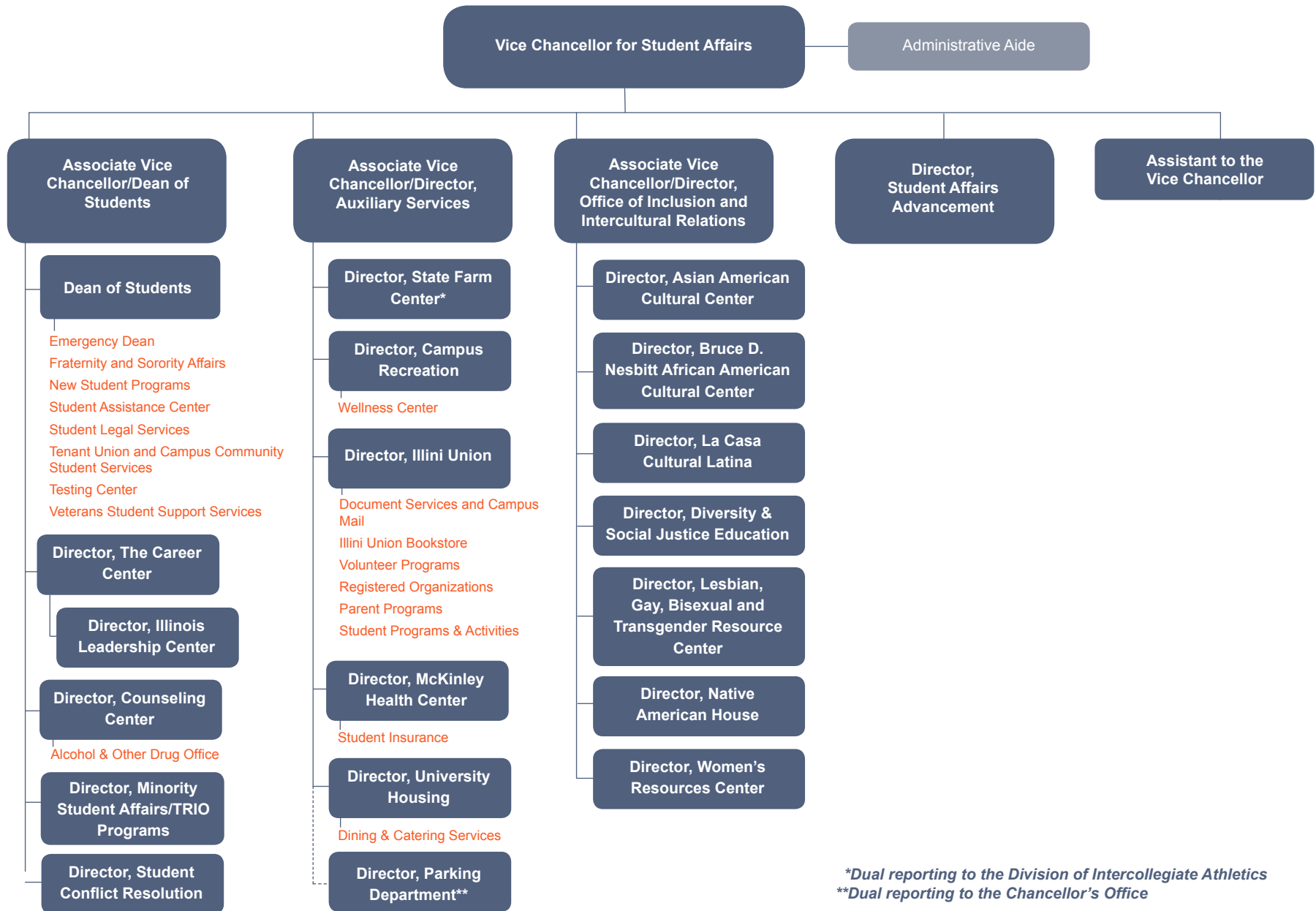
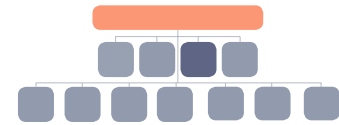
- [Beckman Institute for Advanced Science and Technology](#)
- [Roy J. Carver Biotechnology Center](#)
- [Illinois Program for Research in the Humanities](#)
- [Institute for Sustainability, Energy, and Environment](#)
- [Interdisciplinary Health Sciences Initiative](#)
- [Carl R. Woese Institute for Genomic Biology](#)
- [National Center for Supercomputing Applications](#)
- [Prairie Research Institute](#)
- [Sponsored Programs Administration](#)
- [Office of Proposal Development](#)
- [Office of Corporate Relations](#)

NOTE: Click the top level position to visit the unit's homepage.



Key Reporting Positions Reporting Units
 Reporting Office Website links



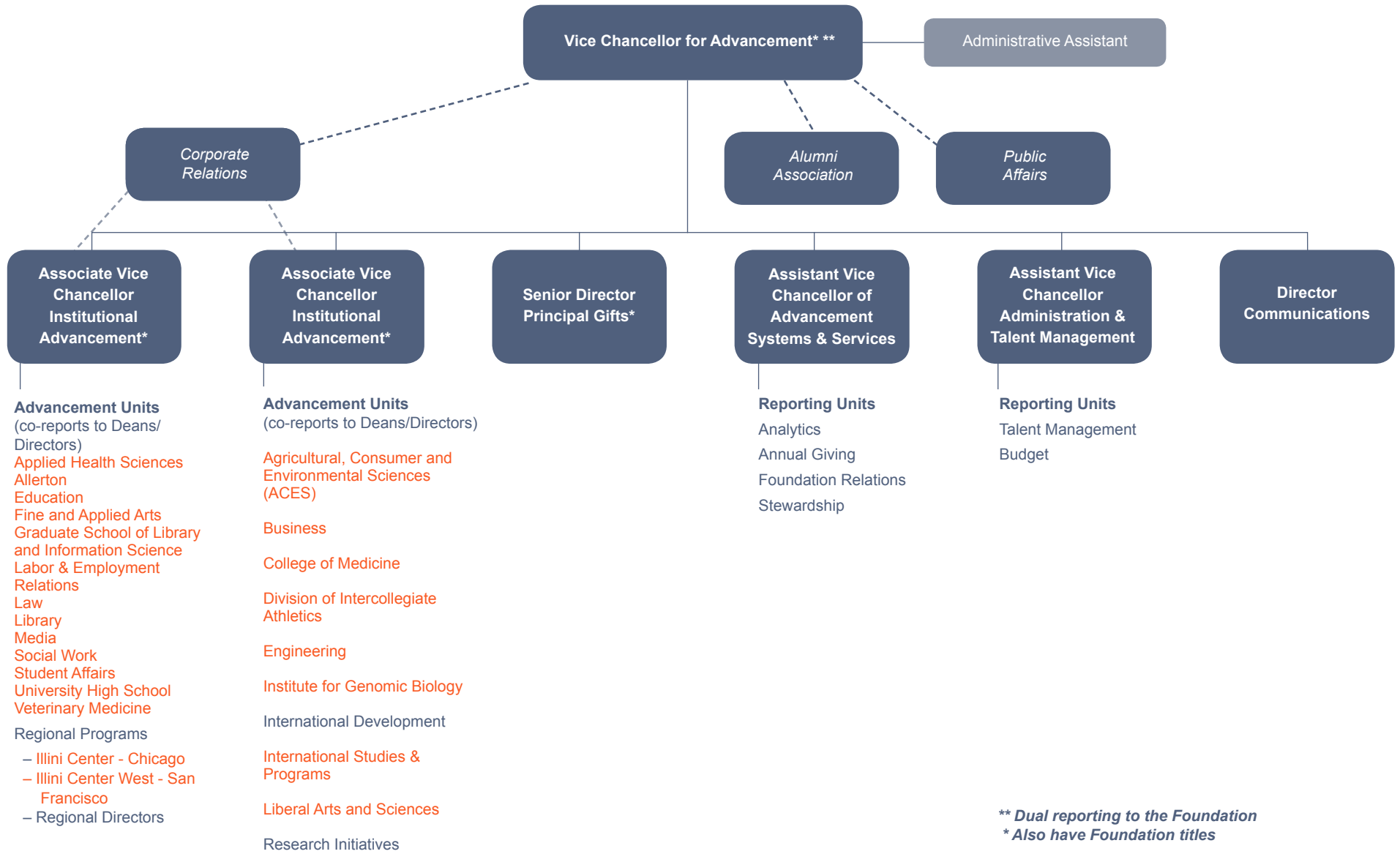
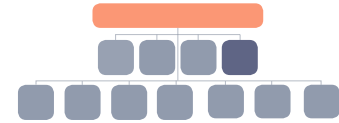


*Dual reporting to the Division of Intercollegiate Athletics
 **Dual reporting to the Chancellor's Office

NOTE: Click the top level position to visit the unit's homepage.



Key **Reporting Positions** Reporting Units
 Reporting Office Website links

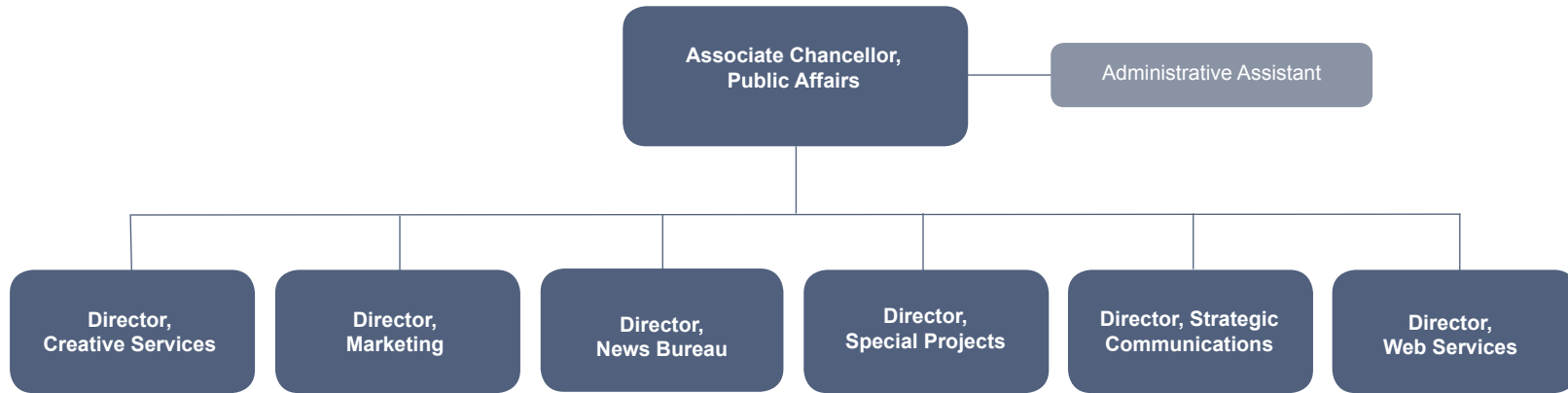
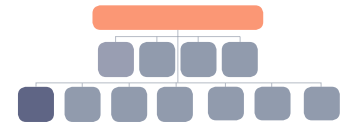


**** Dual reporting to the Foundation**
*** Also have Foundation titles**

NOTE: Click the top level position to visit the unit's homepage.



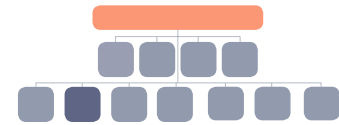
Key Reporting Positions Reporting Units
 Reporting Office Website links



NOTE: Click the top level position to visit the unit's homepage.



Key Reporting Positions Reporting Units
Reporting Office Website links



Sports Oversight
Basketball, Men's
Football, Men's

Deputy Director of Athletics

Responsibilities
Sports Information Ticket Office

Sports Oversight
Football, Men's (Secondary)

Responsibilities
Armory
Atkins Tennis Center - Retail Concessions
Business Office
Golf Course
Human Resources
IT Services
State Farm Center
Summer Camps

Executive Senior Associate Athletics Director, Chief Financial Officer

Executive Senior Associate Athletics Director, Sports Administration

Sports Oversight
Basketball, Men's
Golf, Men's
Tennis, Men's
Volleyball, Women's
Wrestling, Men's

Senior Associate Athletics Director, Chief Integrity Officer

Responsibilities
Academic Services
Athletic Training
Compliance Office
Nutrition
Strength and Conditioning

Senior Associate Athletics Director, Business Development

Responsibilities
Creative Services
Event Management
Marketing
Sponsorship
Video

Senior Associate Athletics Director, Capital Projects and Facilities

Responsibilities
Capital Projects
Facilities

Senior Associate Athletics Director, SWA

Responsibilities
Diversity & Inclusivity
Gender Equity

Sports Oversight
Basketball, Women's
Gymnastics, Women's
Soccer, Women's
Softball, Women's

Executive Senior Associate Athletics Director

Responsibilities
Equipment Sodexo

Sports Oversight
Baseball, Men's
Gymnastics, Men's
Tennis, Women's

Senior Associate Athletics Director, Sports Administration

Sports Oversight
Cross Country, Men's and Women's
Golf, Women's
Swimming
Track & Field, Men's and Women's

Senior Associate Athletics Director, Development

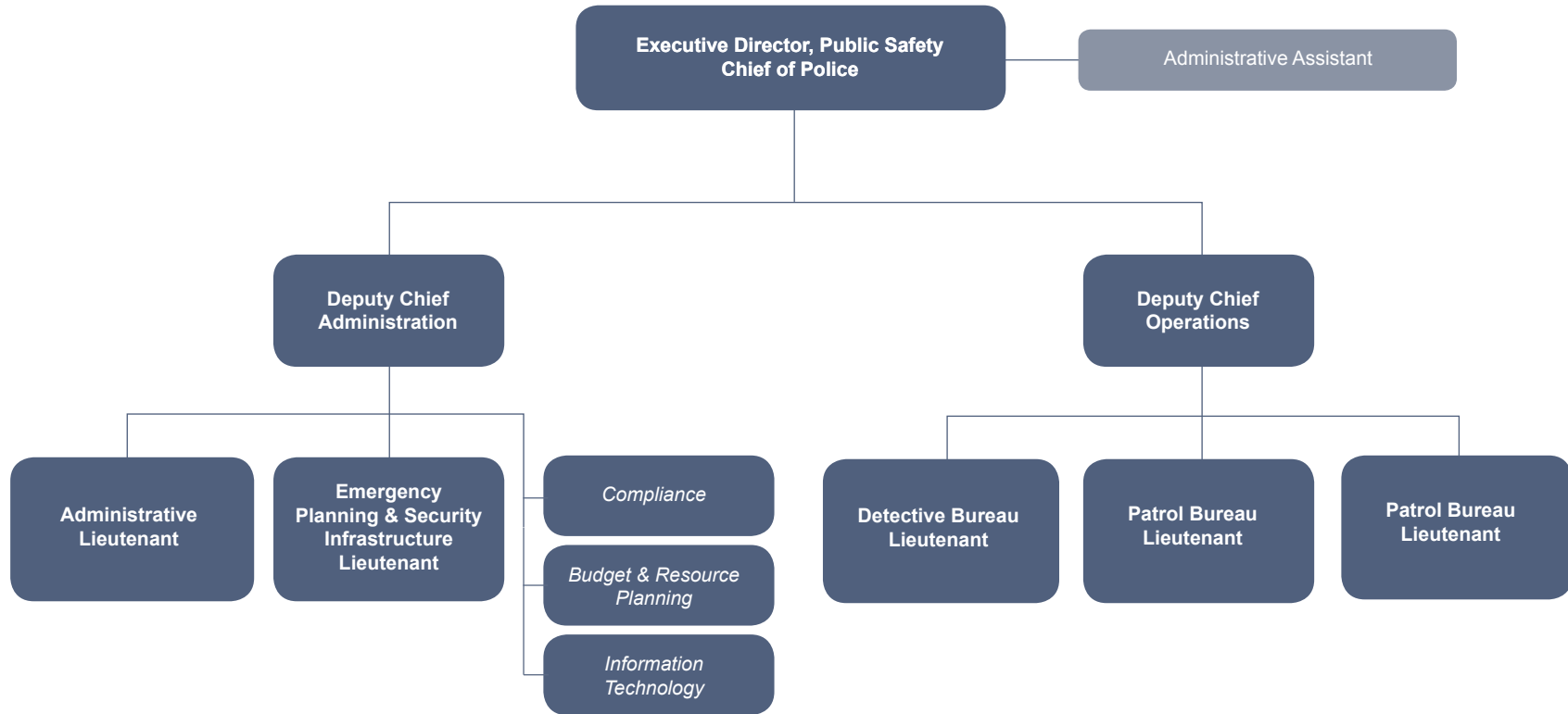
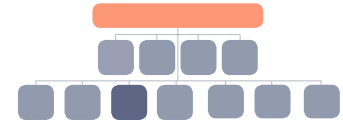
Responsibilities
Capital Campaigns
Endorsements
I Fund
Major Gifts
Planned Giving



NOTE: Click the top level position to visit the unit's homepage.



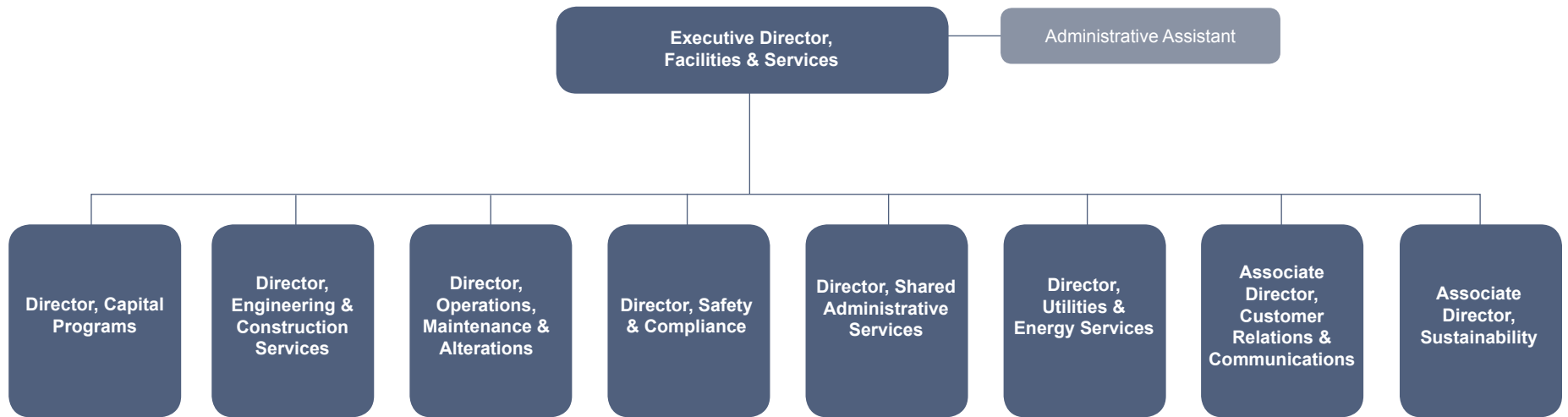
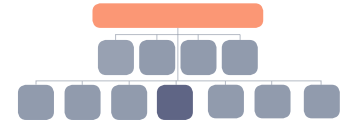
Key Reporting Positions Reporting Units
Reporting Office Website links



NOTE: Click the top level position to visit the unit's homepage.



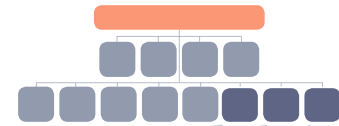
Key **Reporting Positions** Reporting Units
Reporting Office Website links



NOTE: Click the top level position to visit the unit's homepage. [Click here to go to the complete F&S organizational chart.](#)



Key Reporting Positions Reporting Units
Reporting Office Website links



**Associate Chancellor
(Administrative and External Affairs)**

Responsibilities

- Athletics Liaison
- Campus Administrative Manual (CAM)
- Capital and Infrastructure Liaison
- Chancellor's Office Budget
- Community Relations Liaison
- Government Relations Liaison (State/Federal)
- Human Resources Liaison
- Legal Counsel Liaison
- Local Government & Local Government Organizations
- OBFS Liaison
- Contracts and Licensing

Reporting Units

- Parking Department
- Facilities & Services
- Division of Public Safety
- Willard Airport

Associate Chancellor for Diversity

Responsibilities

- Diversity and Inclusion Strategic Leadership
- Diversity and Inclusion - Campus Community Relations
- Liaison to Peer Institutions and National Partners
- Inclusive Illinois
- Recruitment, Retention and Climate Initiatives

**Associate Chancellor
(Academic and Internal Affairs)**

Responsibilities

- Academic Affairs Liaison
- Academic Senate Liaison
- Board of Trustees Liaison
- Campus Charitable Fund Drive (CCFD)
- Campus and Community Day of Service
- Campus Threat Assessment Teams Liaison
- Freedom of Information Act (FOIA) Requests
- Labor Relations Liaison
- Public Engagement

Reporting Units

- Academic Senate Office
- Illinois Fire Service Institute (IFSI)
- Office of Diversity, Equity and Access (ODEA)
- Office of Special Events
- Police Training Institute (PTI)
- Swanlund HR Shared Service Center
- Title IX Coordinator



NOTE: Click the top level position to visit the unit's homepage.



Key **Reporting Positions** Reporting Units
 Reporting Office Website links