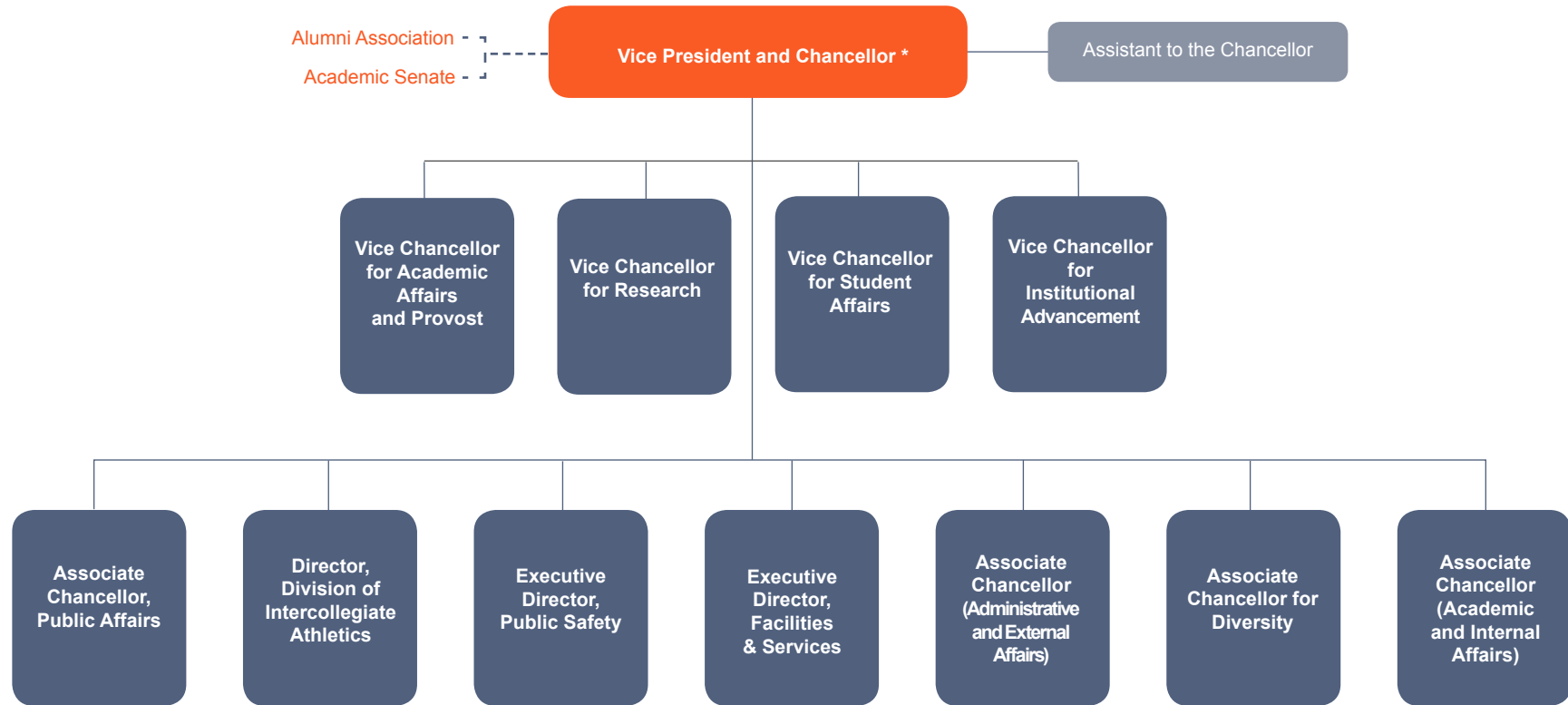
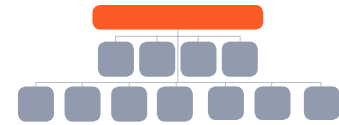


University of Illinois at Urbana-Champaign Administrative Organizational Chart

The University of Illinois at Urbana-Champaign is a large, complex institution. While our missions of learning, discovery and engagement are straightforward, how we organize ourselves to deliver them can sometimes be a little confusing. We hope this interactive organizational chart helps to illustrate how we operate and where all of the parts of a very diverse university fit together.

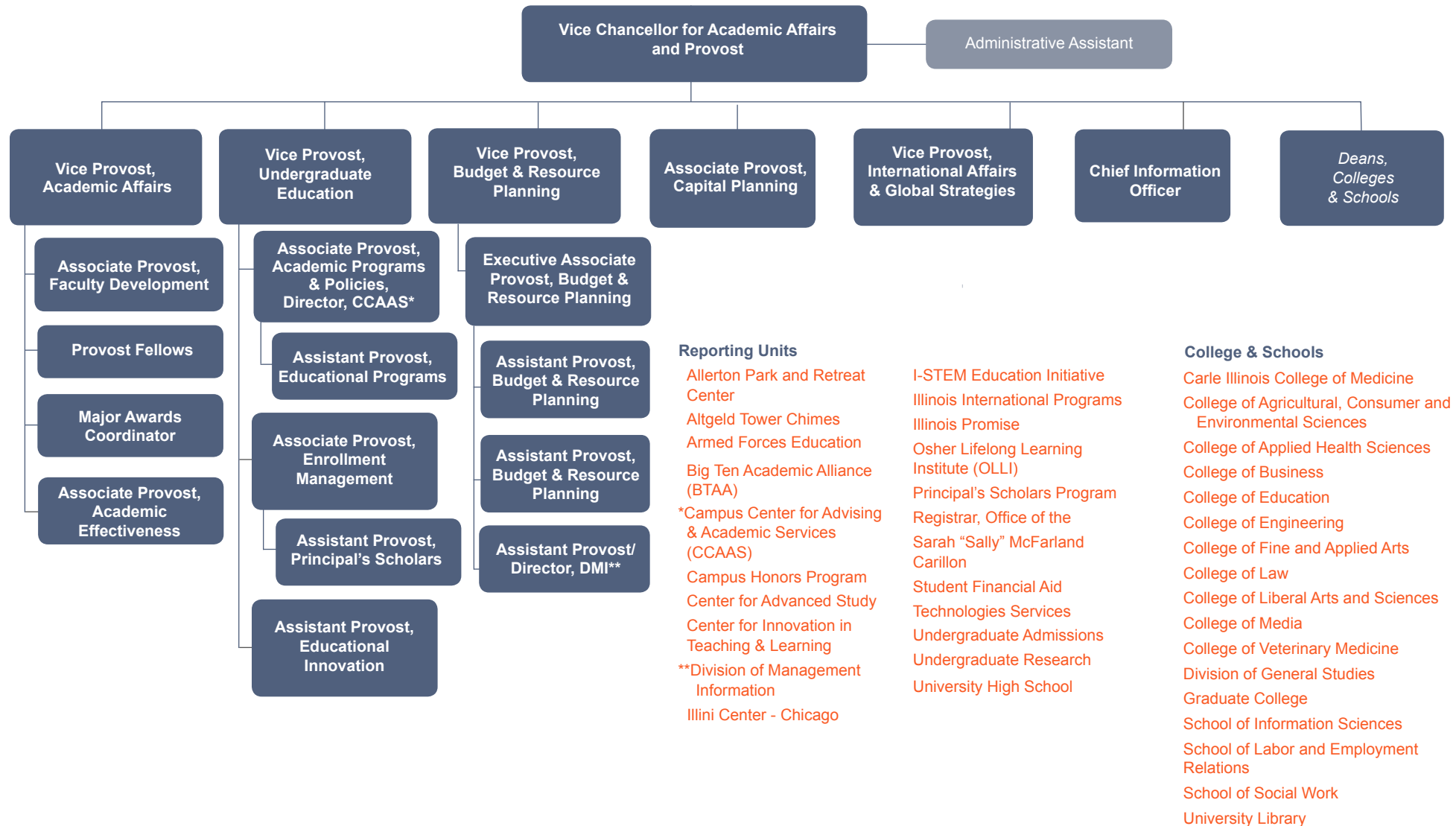
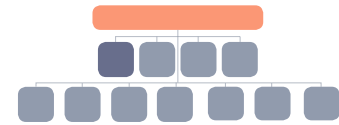


** Also serves as vice president of the University of Illinois system*

NOTE: Click the top level position to visit the unit's homepage.

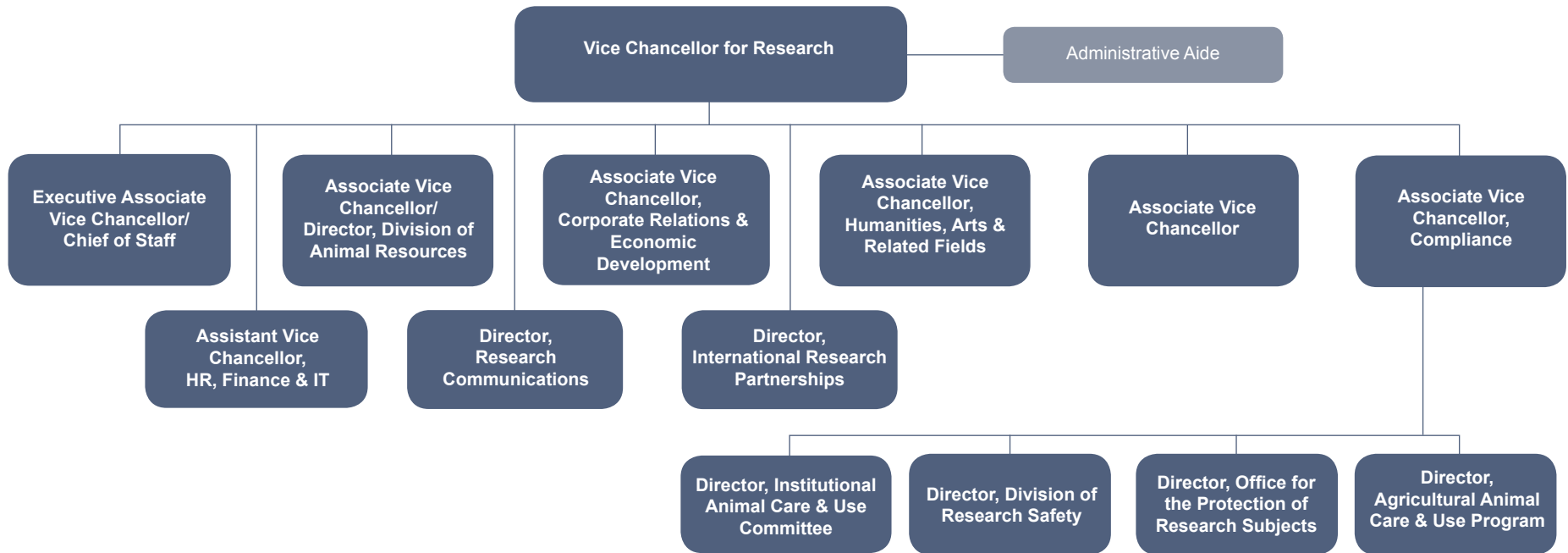
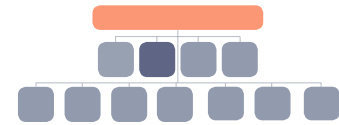


Key **Reporting Positions** Reporting Units
Reporting Office Website links



NOTE: Click the top level position to visit the unit's homepage. Click here for the complete list of responsibilities and reporting units by position.





Reporting Units

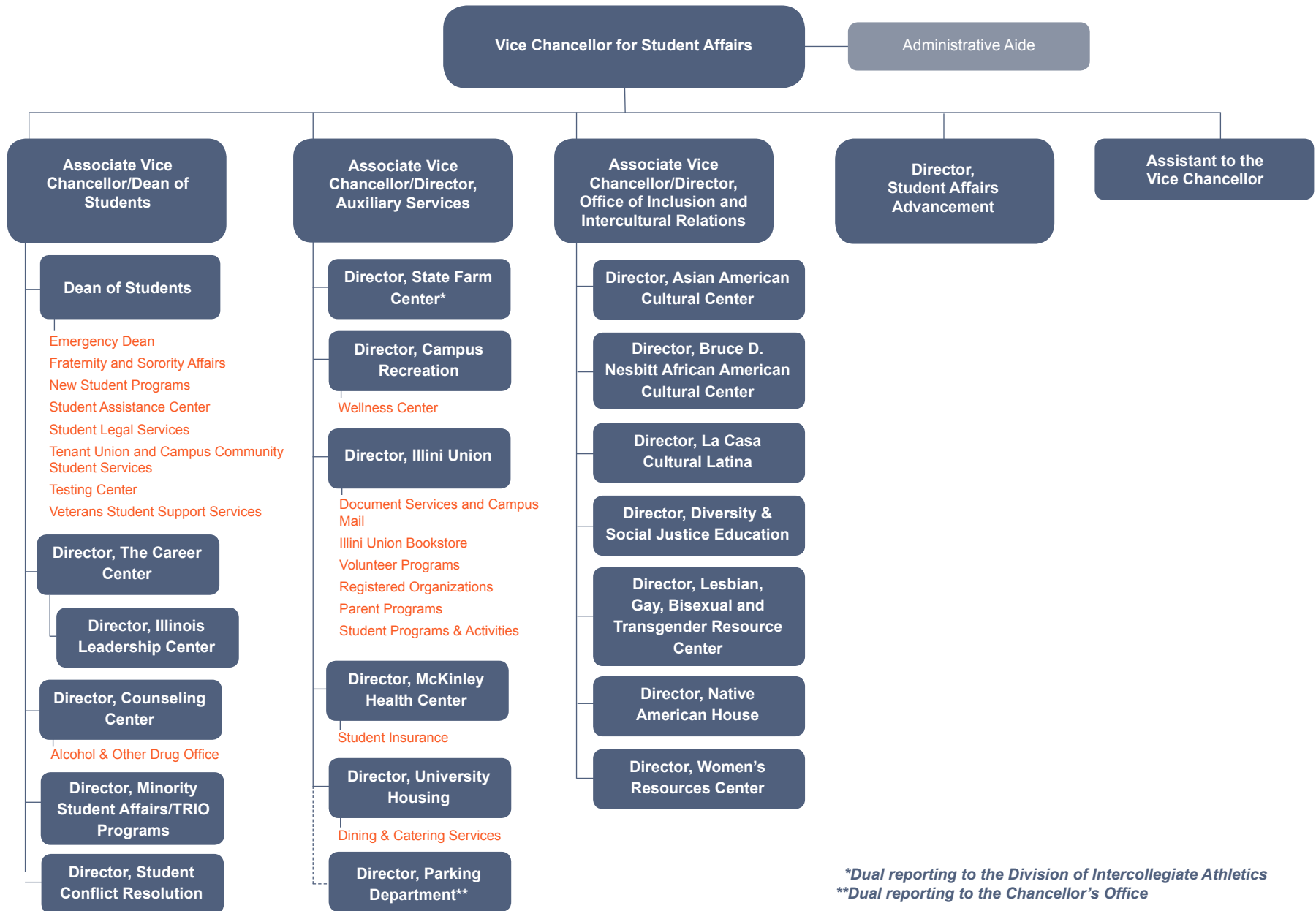
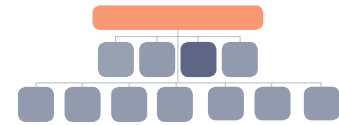
- [Beckman Institute for Advanced Science and Technology](#)
- [Roy J. Carver Biotechnology Center](#)
- [Illinois Program for Research in the Humanities](#)
- [Institute for Sustainability, Energy, and Environment](#)
- [Interdisciplinary Health Sciences Initiative](#)
- [Carl R. Woese Institute for Genomic Biology](#)
- [National Center for Supercomputing Applications](#)
- [Prairie Research Institute](#)
- [Sponsored Programs Administration](#)
- [Office of Proposal Development](#)
- [Office of Corporate Relations](#)

NOTE: Click the top level position to visit the unit's homepage.



Key Reporting Positions Reporting Units
 Reporting Office Website links



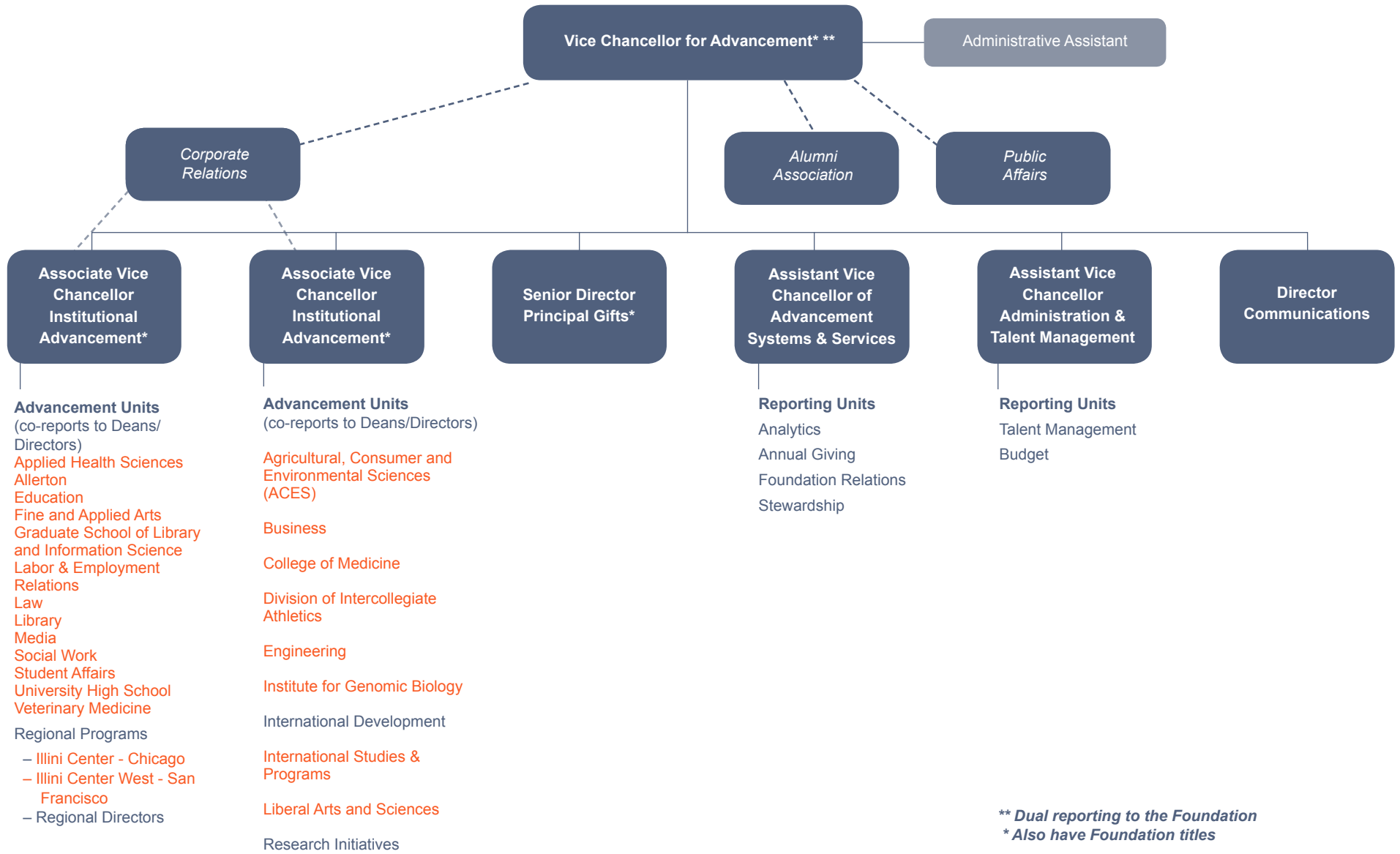
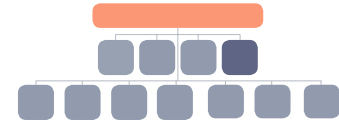


*Dual reporting to the Division of Intercollegiate Athletics
 **Dual reporting to the Chancellor's Office

NOTE: Click the top level position to visit the unit's homepage.



Key **Reporting Positions** Reporting Units
 Reporting Office Website links

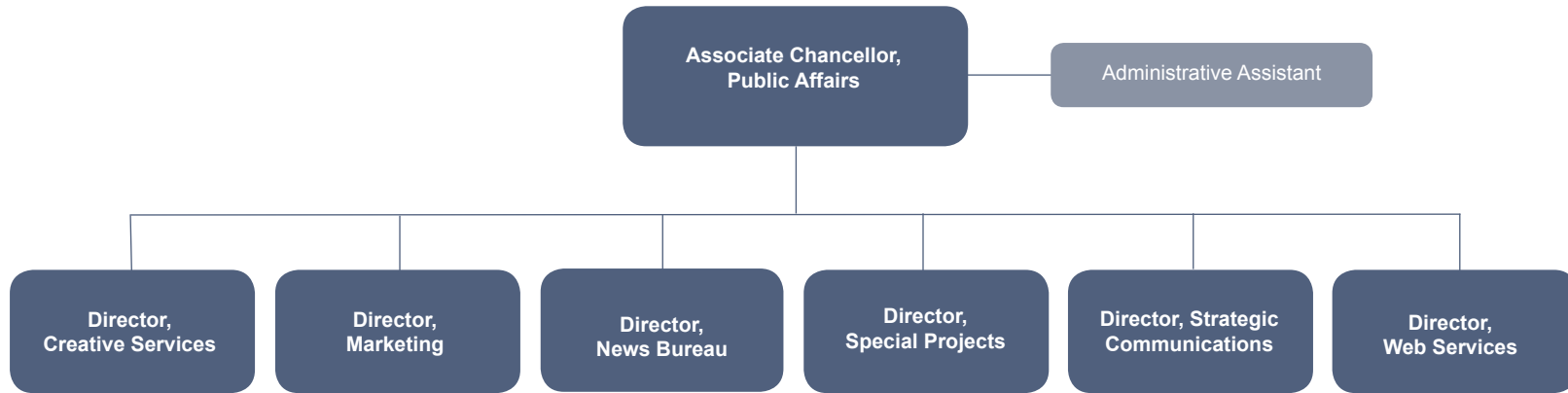
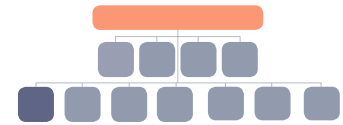


**** Dual reporting to the Foundation**
*** Also have Foundation titles**

NOTE: Click the top level position to visit the unit's homepage.



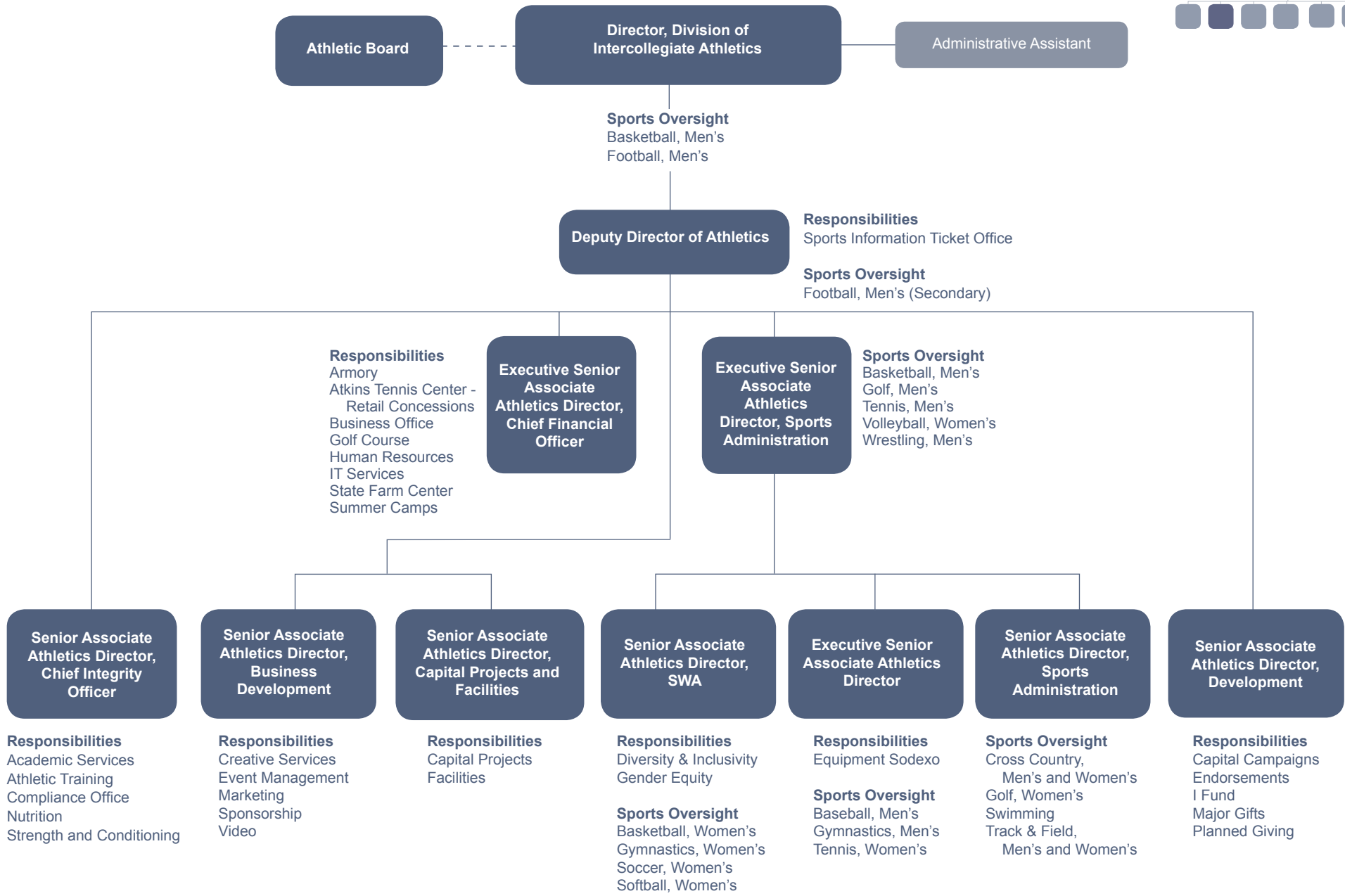
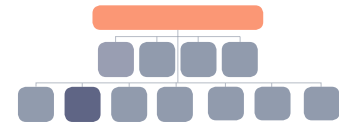
Key Reporting Positions Reporting Units
 Reporting Office Website links



NOTE: Click the top level position to visit the unit's homepage.



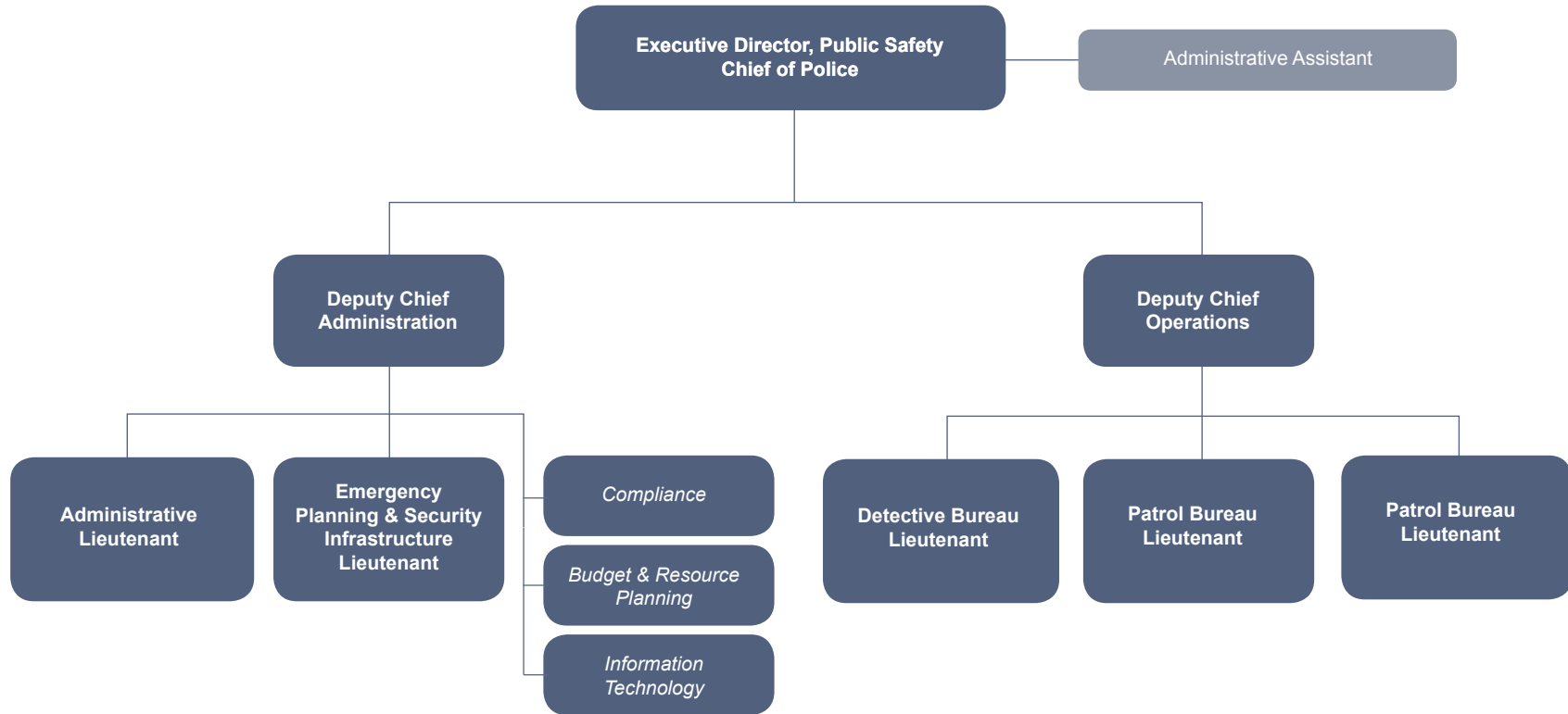
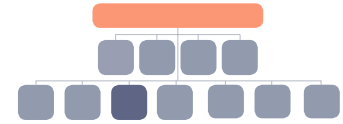
Key Reporting Positions Reporting Units
Reporting Office Website links



NOTE: Click the top level position to visit the unit's homepage.



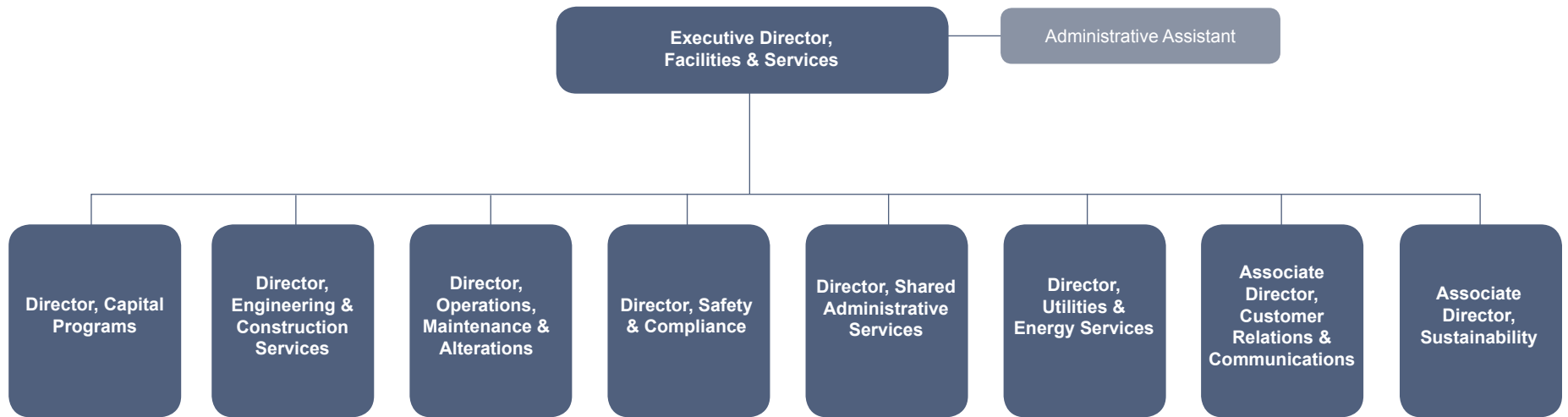
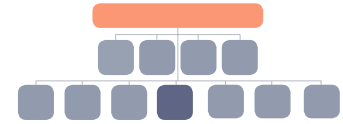
Key **Reporting Positions** Reporting Units
Reporting Office Website links



NOTE: Click the top level position to visit the unit's homepage.



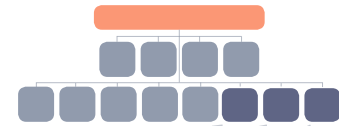
Key **Reporting Positions** Reporting Units
Reporting Office Website links



NOTE: Click the top level position to visit the unit's homepage. [Click here to go to the complete F&S organizational chart.](#)



Key Reporting Positions Reporting Units
Reporting Office Website links



**Associate Chancellor
(Administrative and External Affairs)**

Responsibilities

- Athletics Liaison
- Campus Administrative Manual (CAM)
- Capital and Infrastructure Liaison
- Chancellor's Office Budget
- Community Relations Liaison
- Government Relations Liaison (State/Federal)
- Human Resources Liaison
- Legal Counsel Liaison
- Local Government & Local Government Organizations
- OBFS Liaison
- Contracts and Licensing

Reporting Units

- Parking Department
- Facilities & Services
- Division of Public Safety
- Willard Airport

Associate Chancellor for Diversity

Responsibilities

- Diversity and Inclusion Strategic Leadership
- Diversity and Inclusion - Campus Community Relations
- Liaison to Peer Institutions and National Partners
- Inclusive Illinois
- Recruitment, Retention and Climate Initiatives

**Associate Chancellor
(Academic and Internal Affairs)**

Responsibilities

- Academic Affairs Liaison
- Academic Senate Liaison
- Board of Trustees Liaison
- Campus Charitable Fund Drive (CCFD)
- Campus and Community Day of Service
- Campus Threat Assessment Teams Liaison
- Freedom of Information Act (FOIA) Requests
- Labor Relations Liaison
- Public Engagement

Reporting Units

- Academic Senate Office
- Illinois Fire Service Institute (IFSI)
- Office of Diversity, Equity and Access (ODEA)
- Office of Special Events
- Police Training Institute (PTI)
- Swanlund HR Shared Service Center
- Title IX Coordinator



NOTE: Click the top level position to visit the unit's homepage.



Key **Reporting Positions** Reporting Units
 Reporting Office Website links